



TIS-Web: Getting Started

Security settings

****Important Notice****

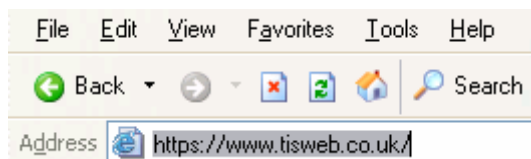
PLEASE ADD www.tisweb.co.uk AS A TRUSTED SITE AND ENABLE ACTIVE X CONTROLS PRIOR TO LOGGING ON.

If this is not completed you will receive an error advising "there is a problem with the client installer, please contact the system administrator!"

To add as trusted site, please follow the below steps

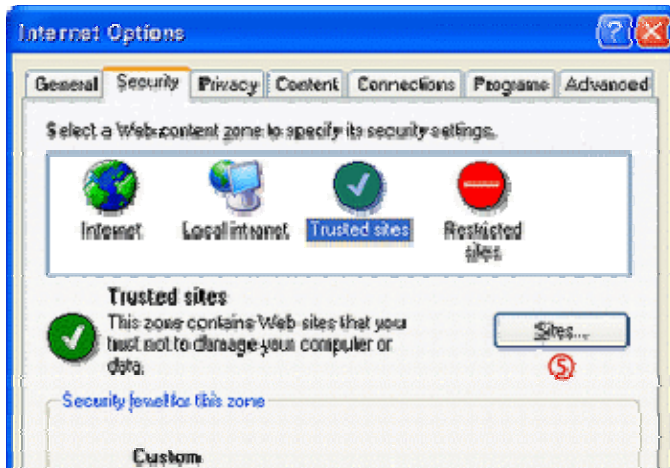
1. Go the Web site you want to add to a zone.
2. Press **ALT+D** to select the Web address, and press **CTRL+C** to copy it to the Windows Clipboard.

This saves you from having to type it later.

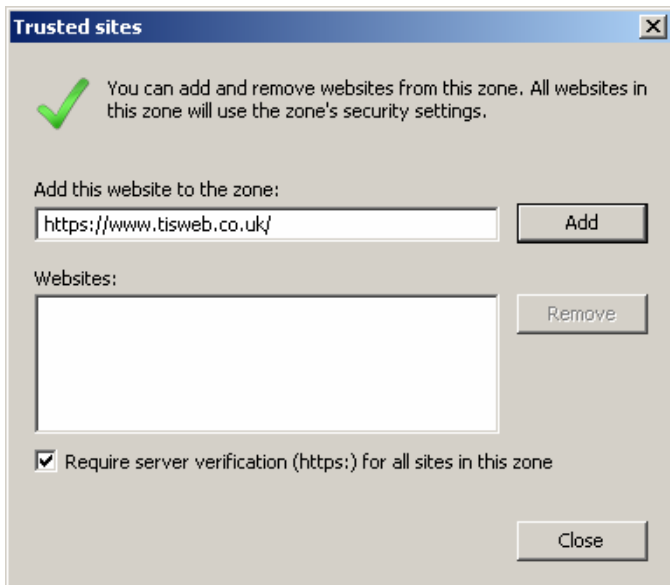


On the Internet Explorer 6 **Tools** menu, click **Internet Options**.

4. Click the **Security** tab, and then click on **Trusted sites**
5. Click on the **Sites** button (see image below)



6. Click the cursor into the **Add this website to the zone:** box press **CTRL+V** to paste in the web site address (see image below).



PLEASE ENSURE THAT YOU HAVE TICKED THE BOX FOR "REQUIRE SERVER VERIFICATION (HTTPS:) FOR ALL SITES IN THIS ZONE"

7. Click the **Add** button.

8. Click **OK** twice.

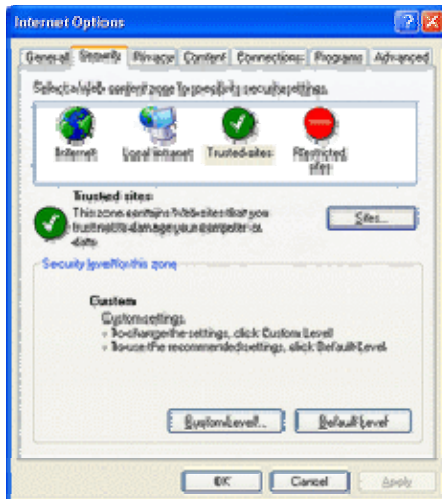


Tip: To see the list of web sites you've added to Trusted and Restricted sites. On the Internet Explorer **Tools** menu, click **Internet Options** then click the **Security** tab and then click either **Trusted** or **Restricted** sites. Click the **Sites** button to view the list. When you are finished, click **Cancel** twice.

Change the Security Level of a Zone

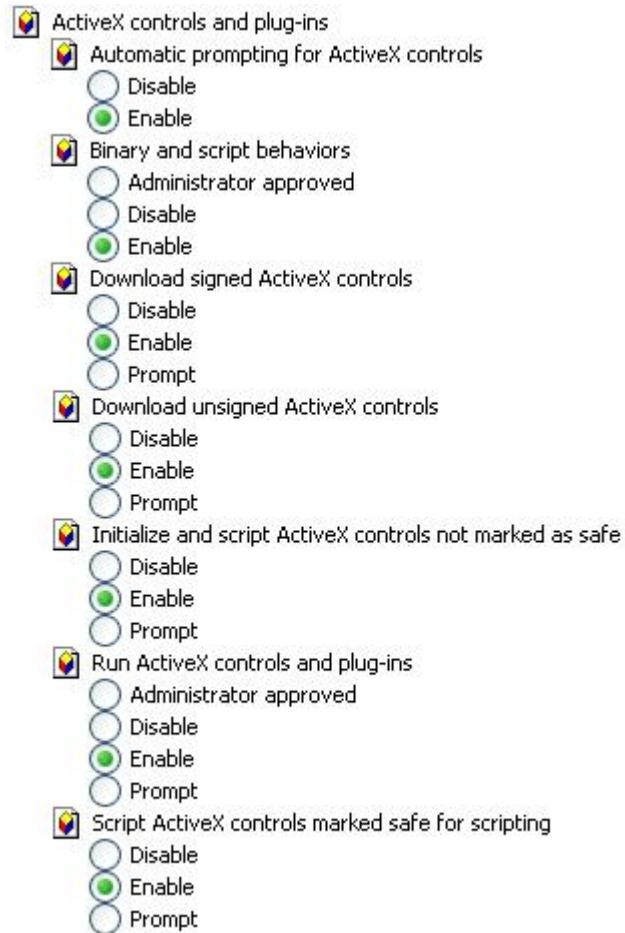
Follow these steps to raise or lower the threshold of security for any zone—for example, you might want to raise the security setting of your Trusted sites to medium-low.

1. On the Internet Explorer 6 **Tools** menu, click **Internet Options**
2. Click the **Security** tab and then click **Trusted sites..**



3. Click on **Custom Level...**

Make sure that ActiveX controls and plug-in settings are all set to "**Enable**". If they are not set to "Enable" please change.



Logging On

To use TIS-Web you must log in using your personal access data.

Internet address

- 1 Select TIS-Web by entering the URL directly, e.g. "http://www.tis-web.co.uk/" or use the URL provided by Siemens VDO.
- 2 Left click on the **Login** button.

A message may appear telling you that a secure connection is being established. Confirm this with **OK**.

Login page



Account data

- 3 Enter your account data (Account, User, Password) each time.
- 4 Click on Sign On.

Selecting Services

On this **Switchboard** page you can

- select the service that you have registered for,
- find the latest information on the different services,
- change your password,
- sign off when you wish to exit TIS-Web services.

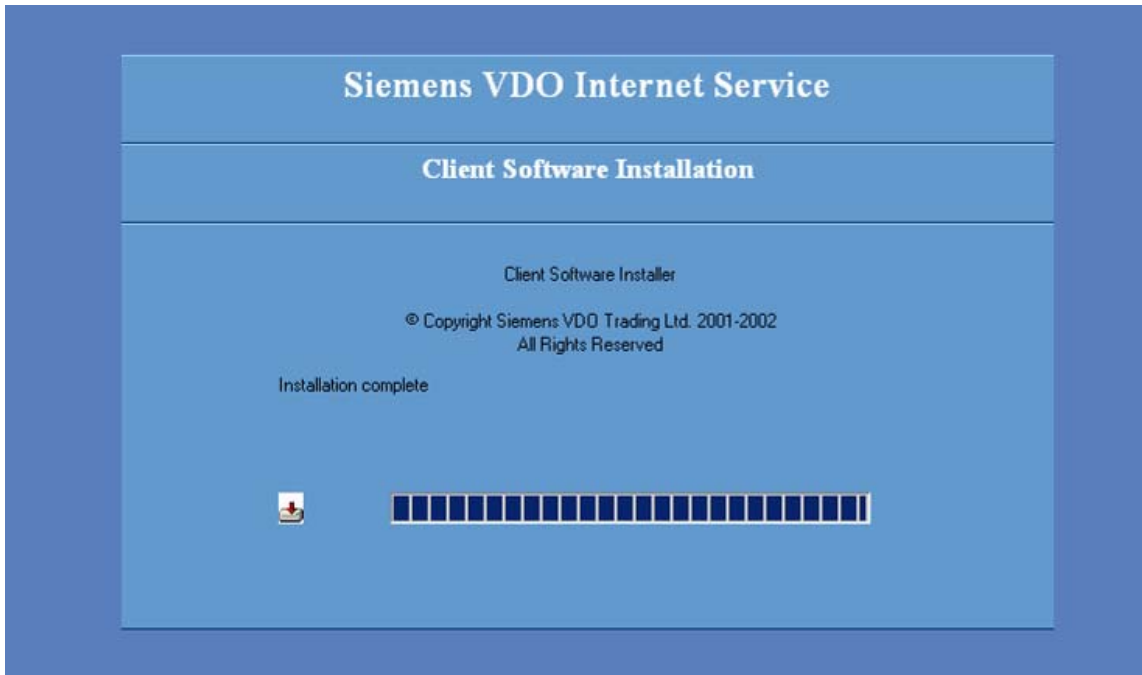
Change Password

Services	Ver	Start Date	Expiry Date	Messages
TIS-Web Evaluation	1.06	01 April 2006	31 December 2037	
TIS-Web Archive	1.09	01 April 2006	31 December 2037	

Please select one of the highlighted Services / Sign Off

To select the required service click on the required button. The following screen will be displayed while the TIS-Web application starts to load.

Note: During this activity additional components may be loaded by TIS-Web to support system upgrades.



Changing Passwords

To change your password. In the Switchboard click on **Change Password**. The TIS-Web Archive page with your account and user information will be displayed.

The screenshot shows the TIS-Web interface. At the top left is the Siemens VDO Automotive logo. To its right, the text 'Account: SVT-JRTEST' is displayed. Further right, 'User: SVT-SJ01' is shown. Below the logo is a 'TIS-Web' label. In the center, there are two buttons: 'Update' and 'Back'. The main content area is divided into two columns. The left column is titled 'Personal Information' and contains the following text: 'James Test Account', 'SVDO SWINDON', 'SWINDON', 'SN1 2NR', 'Tel:', and 'Fax:'. The right column is titled 'Change Password' and contains three input fields: 'Previous Password', 'New Password', and 'Confirm Password'.

Enter your current password.

Enter the new password.

Enter the new password to confirm.

Select **Update** to activate new password.

The new password is now active.

Sign Off

Once the TIS-Web activities have been completed, close TIS-Web via the Switchboard.

In the top menu area click on Switchboard. If you have forgotten to save any data entered or modified, TIS-Web Archive will display a warning message.

Click on **Sign Off** - A message will appear asking you if you really want to sign off.

Click on **Yes** to terminate the connection to the TIS-Web server.

The Web service home page or your Internet Explorer start page will be displayed.

Please Note:

These step by step instructions are only intended to provide a quick guide to TIS-Web. Full operating Instructions are also provided and these should be used in conjunction with this guide.

The information contained in this documentation is subject to change without prior notice. In doing so, Siemens VDO Trading Ltd does not enter into any obligation. The description is based on the information available at the time this documentation was printed. We reserve the right to change technical details in the description, information and illustrations in this step by step guide.

Siemens VDO Trading Ltd shall accept no liability for program errors and for incorrect information in the documentation as well as for any consequential damages arising from this.

© by Siemens VDO Trading Ltd 2007. All rights reserved.